

Children and Young People's Mental Health Call

Information webinar

04.02.2021

Agenda

- Introduction to the call
- WWCS – focus on the call and support available
- NIHR application process
- Questions



Presenters

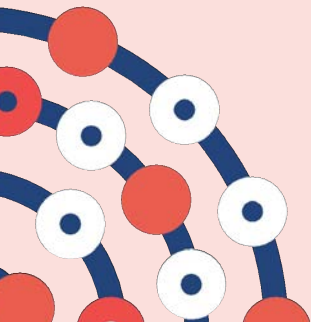
- **Sheetal Bhurke**, Research Manager - Identification and Prioritisation, NIHR
- **Louise Jones**, Director of Programmes, WWCS
- **Suzy Hopper**, Senior Research Manager – Application and Funding, NIHR



About NIHR



- The National Institute for Health Research (NIHR) invests in research to help the NHS and care providers meet the major health and social challenges they face
- NIHR funds research that has the potential to improve the health of patients, the public and health and care services



Health Services and Delivery Research (HS&DR) Programme

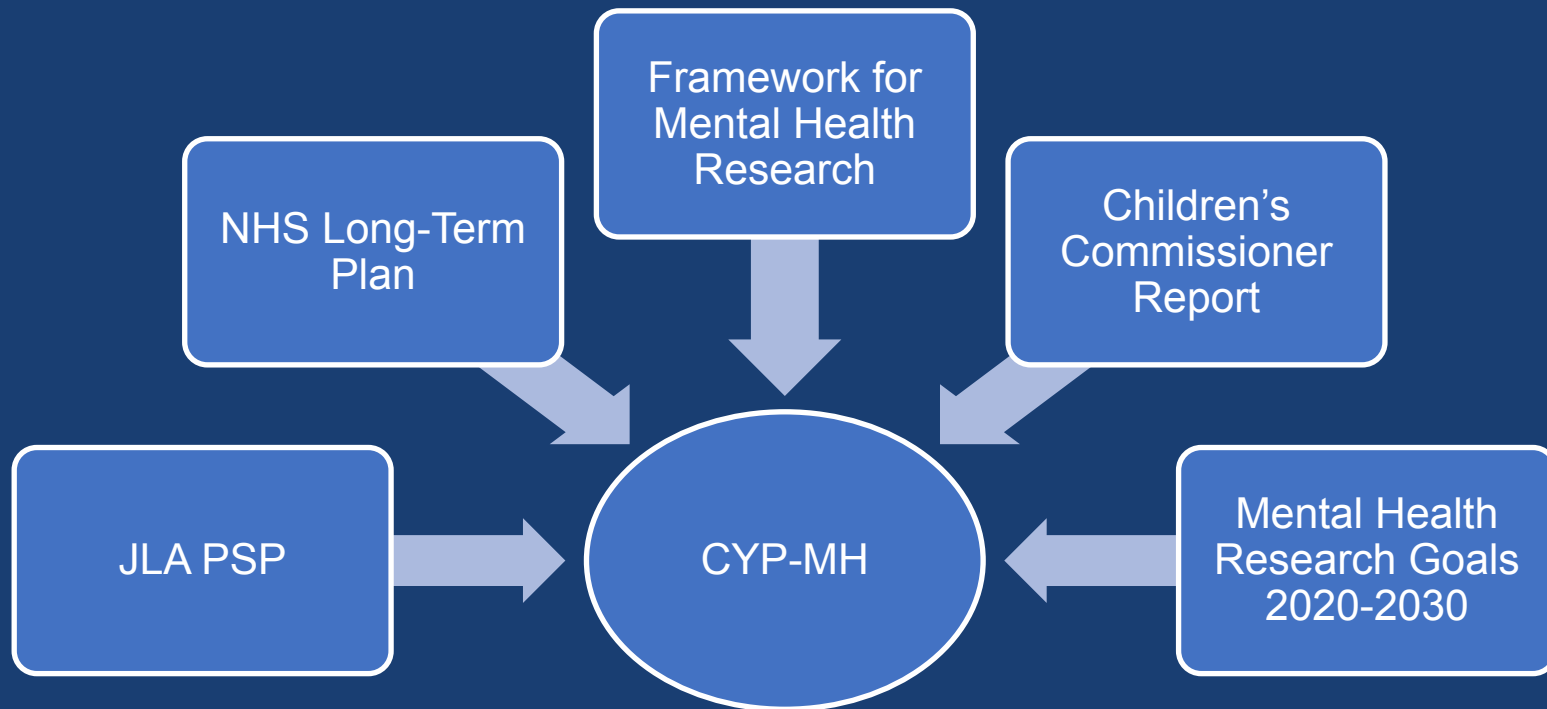


- We fund research to produce evidence to impact on the quality, accessibility and organisation of health and social care services.
- This includes evaluations of how the NHS and social care might improve delivery of services.
- The audience for this research is the public, service users, clinicians, professionals and managers.

Research that will make a difference!



Children and Young People's Mental Health – Why?



21/04 Children and Young People's Mental Health

– What is in scope?

- High quality, research to improve the quality of care, support and access to services for CYP with mental health conditions.
- Children who currently have or previously had contact with a social worker
- Applications received with a focus on CYP with mental health conditions who currently have or previously had a social worker will be considered for joint funding by the HS&DR Programme and WWCS.
- Applications that involve CYP who have not been in touch with the children's social care system that are within the remit of the HS&DR Programme are welcomed and will be considered for funding by the HS&DR Programme alone.

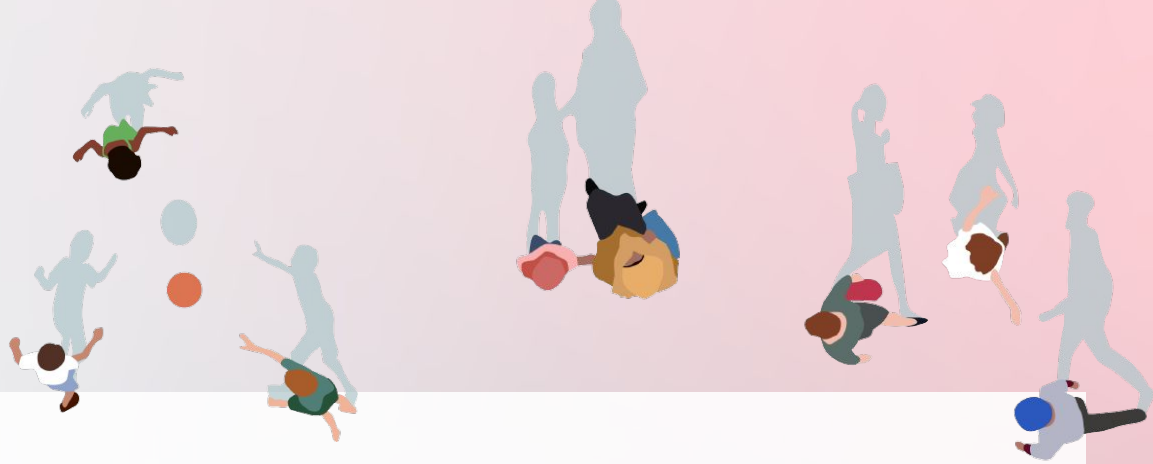
21/04 Children and Young People's Mental Health – What are we looking for?

❑ **Early identification and interventions**

- Approaches to early identification of CYP with mental health conditions including use of a multisectoral approach
- Interventions or strategies for improving mental health resilience in CYP with mental health condition

❑ **Access to services**

- Models of care to improve access and support services for CYP with mental health
- Organisation and delivery of mental health services including culturally appropriate services
- Innovative models of care of mental health services in rural areas



About WWCSC



Why do we exist?

Young people with a social worker experience many challenges

Every child deserves the chance to thrive



Why do we exist?

To deliver better outcomes for young people and families across the country, we need to know what works - for whom - and see effective practice spread far and wide.

By producing high quality evidence on “what works” and helping translate this into practice, we hope to help all children fulfil their potential



What do we do?

We conduct & fund large scale research projects to find out how different elements of practice, and different ways of working, can lead to better outcomes

We pull together the best available research to provide recommendations and advice to professionals and system leaders.

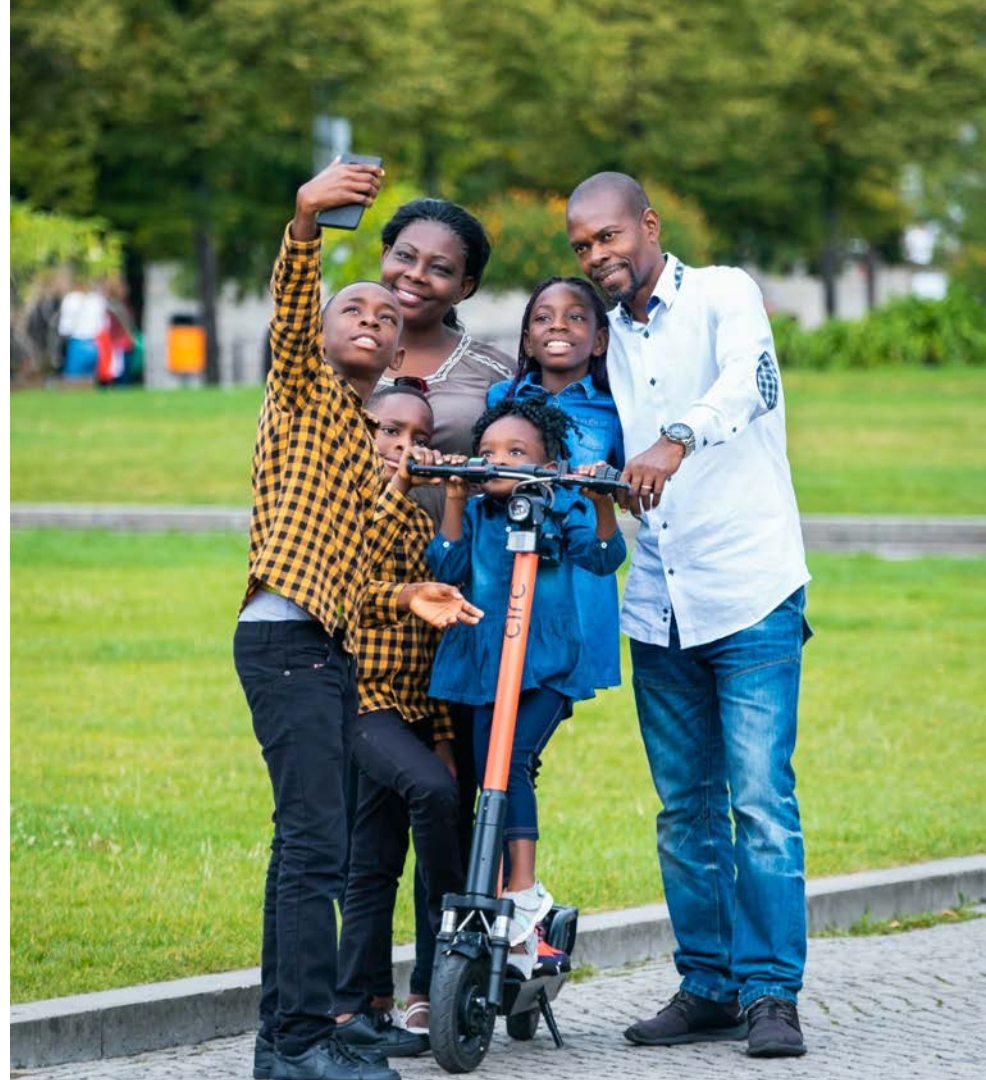
We invest in projects to take successful practice to a larger scale and a wider audience.



Children & young people's mental health is a priority for us

We conducted a research prioritisation exercise in 2020 which gathered the views of over 250 stakeholders

Mental health of CYP was consistently considered to be high priority



Our approach as a funder

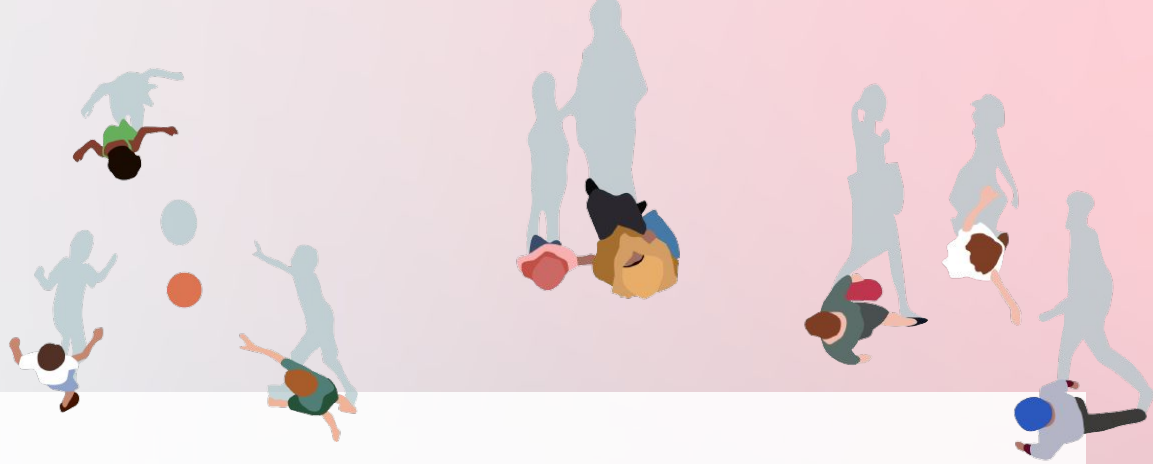
A sector led approach

- Good ideas can come from anywhere
- We believe that the *best* ideas probably come from people who work with children and young people everyday
- But sadly not all great ideas work
- This means that great ideas and innovation need to be paired with rigorous evaluation

This call

- We want to see ideas from sector experts, health and social care professionals, and service users
- And proposals which seek to evaluate services, interventions or programmes that are either new or already exist and are ready to be scaled up
- But we understand that research expertise or capacity might not be readily available





Pre-submission support



WWCSC Consultation

Please note this is not a requirement, and applicants are welcome to apply directly to Stage 1.

Potential applicants interested in seeking a research partnership, with support from WWCSC, should submit a short summary of their proposed programme by **26th February**.

We understand that these are your initial ideas only - and we don't expect you to have all of the answers at this stage. Summaries submitted to WWCSC will not be assessed as part of the review process.



WWCSC Consultation

Our Research team will schedule consultation calls with applicants who have submitted summaries to:

- Discuss the research idea
- Provide advice on the potential research or evaluation methodology
- Prepare key points for the virtual workshops



WWCSC Virtual workshops

Potential applicants have opportunity to discuss their proposed research idea summary with researchers, who will also be invited to ask clarification questions.

Researchers interested in signing up to these workshops, should register their interest on the WWCSC website by **22nd March**.

After the workshops, we would look to circulate contact information to all attendees, so that suitable partners can begin conversations about developing joint applications.



Activity	Date
Introduction to the funding opportunity and FAQ webinar. Details can be found here .	4 February 2021 (12-1pm)
Deadline to submit initial proposal summary to WWCSG by emailing programmes@whatworks-csc.org.uk	26 February 2021
WWCSG research consultation	March 2021
WWCSG virtual workshops (Researchers to register their interest by 22nd March)	April 2021
Stage 1 application deadline	3 June 2021

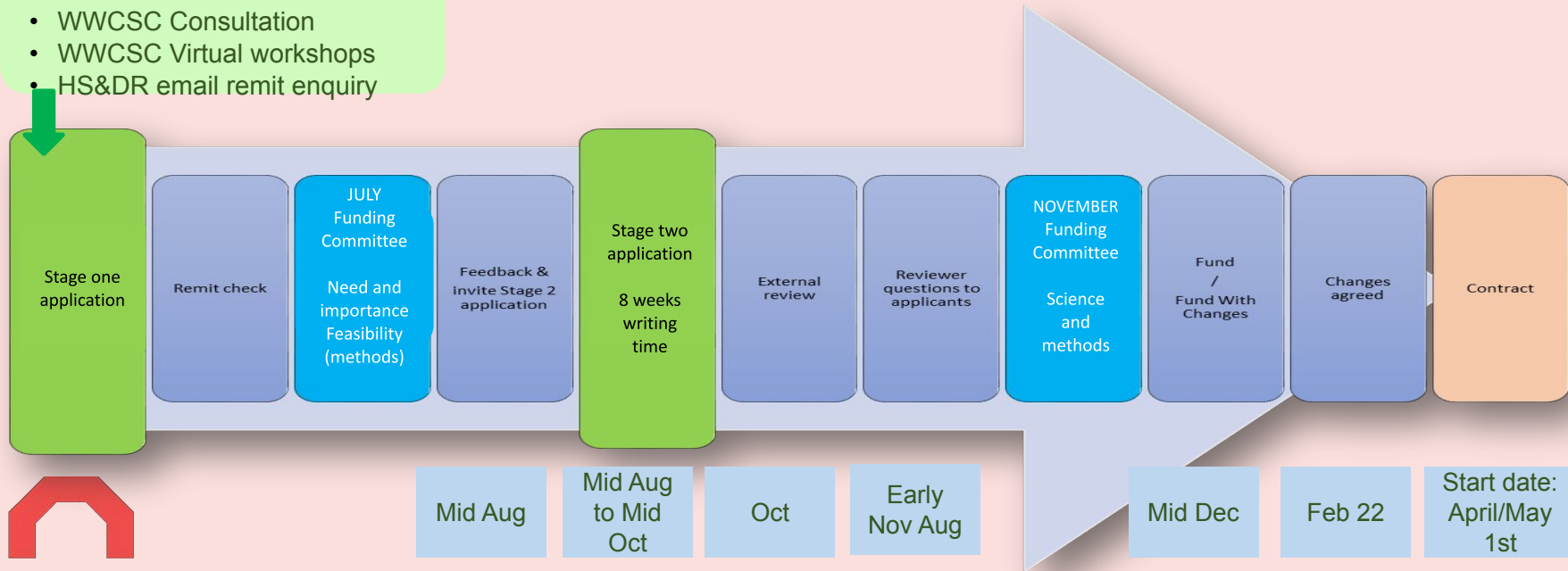


How to make a good application

Application process

Pre-submission support:

- Webinar
- WWCS Consultation
- WWCS Virtual workshops
- HS&DR email remit enquiry



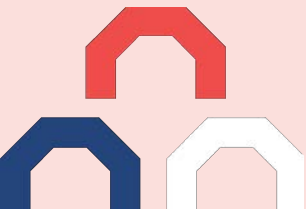
How to make a good application



Getting started: Read the Guidance!

Stage one guidance notes - available on the web advert page:
<https://www.nihr.ac.uk/funding/2104-children-and-young-peoples-mental-health/26585>

Stage one supporting information:
<https://www.nihr.ac.uk/documents/supporting-information-for-applicants-applying-to-the-hsanddr-programme/19930>



How to make a good application

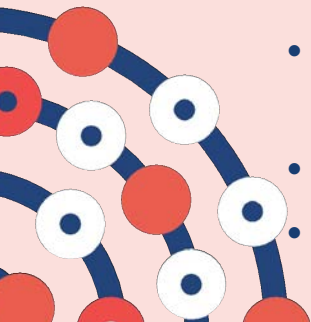


Step 1: REMIT AND COMPETITIVENESS

REMIT: Describe how your proposal meets the requirements of the call

COMPETITIVENESS: Demonstrate that your proposal is competitive:

- Good value for money (costs v. time v. outputs)
- Appropriate scale – generalisable Approach and outputs
- The right skill mix on your team - delivery
- Stakeholder engagement – grounded and relevant - impact
- Patient and Public Involvement (PPI) – shaped proposal and ongoing input
- If unsuccessful: small studies may be redirected to NIHR
- Research for Patient Benefit – Social Care



How to make a good application



Step 2: Funding Committee

Criteria:

1. **Need and Importance**
2. **Feasibility**
3. **Methods**

Tips:

Describe the need for the research i.e. what evidence gap will be filled – who needs this research
- what difference this will make to children and young people and social care services

Assume no previous knowledge – tell your story in full - Plain English summary

Demonstrate how your Lead(s) and team are qualified/experienced

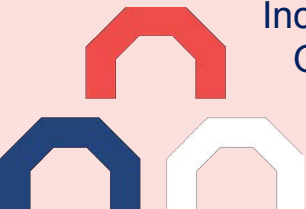
Justify your approach (theory, methods, outcomes), scale (sample size/sites)

PPI embedded, supported and costed

Inclusion

Outputs, audience, dissemination strategy

(check pdf for presentation – white space – flow-chart)



How to make a good application



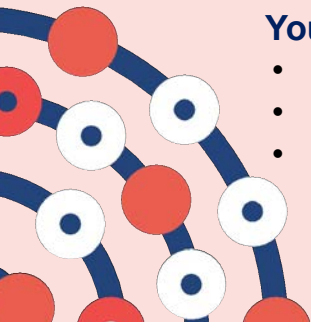
Step 3: Stage two application form – assessed by Funding Committee

Applications assessed for the robustness of the scientific approach proposed

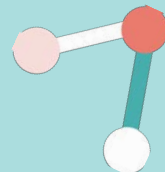
- 20 page Detailed Research Plan – full methods details
- Detailed budget – breakdown of costs for team and activities (allocation - SoECAT)
- Justification of costs
- Dedicated Patient and Public Involvement section – PPI to be embedded and meaningful
- Co-applicants all provide CV information
- Sponsor, Head of Department, and Finance Officer provide sign-off
- Gantt chart
- Ethics approval

You are recommended to make the most of opportunities to improve your application:

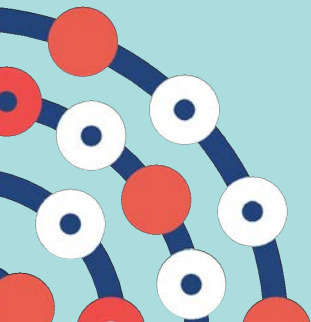
- Changes to First stage – important to show have you have responded to Committee's feedback
- Response to external review: opportunity to provide extra detail – consider suggestions
- Additional space to add detail about how study fits within current evidence and policy direction (future proof), expertise and team, methods, risk mitigation, inclusion, and dissemination products.

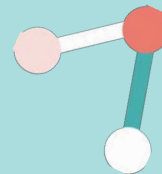


Further support for researchers



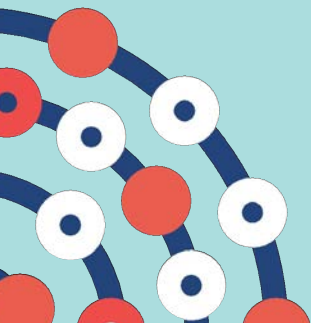
- [NIHR Research Design Service \(RDS\)](#)
- [NIHR Website](#), [NIHR Journals Library website](#), [NIHR Open Data Platform](#), [NIHR Funding and Awards website](#)
- Enquiries - whether remit or process, contact the email address provided in the highlight notice
hsdrinfo@nihr.ac.uk





Apply by **1.00pm on Thursday 3rd June 2021**

GOOD LUCK!





Questions?





What Works *for*
Children's
Social Care

NIHR | National Institute
for Health Research

Thank you!